

**ITEM 3. ITEM FOR COMMITTEE INFORMATION – STREET EVENTS –
TEMPORARY ROAD CLOSURE – 2016 LISTEN OUT MUSIC
FESTIVAL – MOORE PARK ROAD CENTENNIAL PARK**

TRIM RECORD NO: 2016/497338

RECOMMENDATION

It is recommended that the Committee note the temporary road closure of Moore Park Road at Oxford Street, Centennial Park, between 9pm and 11:30pm on Saturday 1 October 2016, subject to the following conditions:

- (A) This temporary road closure is to be activated only if it is deemed necessary by the NSW Police for the safe egress of the event crowd.
- (B) The Applicant must comply with the temporary road closures conditions as stipulated in Schedule C of this agenda.
- (C) The Applicant must apply to the Transport Management Centre for a Road Occupancy License for the temporary road closure
- (D) The Applicant must contact Eastern Beaches Police to discuss deployment of user pay police for this event.
- (E) The Applicant must contact the City’s Venue Management Unit to discuss the event.

<i>Voting Members</i>	<i>Support</i>	<i>Object</i>
City of Sydney		
Roads and Maritime Services		
NSW Police – Surry Hills LAC / Eastern Beaches LAC		
Representative for the Member for Heffron / Sydney		

DECISION

BACKGROUND

Matt Giles from Event Services International Pty Ltd applied on behalf of the Event Organiser (Fuzzy Pty Ltd) for the short-term temporary road closure of Moore Park Road at Oxford Street for the 2016 Listen Out Music Festival, between 9pm and 11:30pm on Saturday 1 October 2016.

This temporary road closure was to be activated only if it is deemed necessary by the NSW Police for the safe egress of the event crowd.

COMMENTS

Listen Out Music Festival is annual music festival occurring in Centennial Parklands on Saturday 1 October 2016 from 12 noon to 10pm for up to 20,000 patrons. The event requires the closure of Moore Park Road at the intersection with Oxford Street at the

conclusion of the event to assist with the safe dispersal of the crowd. This closure will be only activated if deemed necessary by NSW Police to ensure the safety of the event crowd.

A TMP for the event was approved by the RMS and agreement was obtained from the RMS, TMC and the Police for the temporary road closure to occur prior to the Committee meeting.

If the closure is activated, it will be implemented by the NSW Police – Eastern Beaches Local Area Command from 9pm to 11:30pm to assist with the safe movement of pedestrians out of the Paddington Gates of Centennial Parklands and across the intersection of Moore Park Road onto Oxford Street.

Traffic travelling westbound on Moore Park Road will be diverted to stay on Oxford Street to travel towards the City and then south onto South Dowling Street. The organisers will work with the Transport Management Centre to monitor flow along this road to minimise disruptions to motorists travelling on Oxford Street.

Traffic travelling eastbound on Moore Park Road will be able to proceed through to the intersection of Oxford Street only under the direction of NSW Police. There will be no forced diversions for eastbound traffic but a strong VMS messaging strategy will be implemented to divert as many vehicles as possible before they reach Moore Park Road eastbound.

A further contingency will exist in the plan to implement an eastbound closure of Moore Park Road at Oatley Road should pedestrian volumes exceed controllable rates. This will only be implemented at the direction of NSW Police.

Portable and permanent VMS Boards will be utilised on Cleveland Street, Flinders Street, South Dowling Street and Anzac Parade to provide advanced warning of anticipated delays and detours. These are able to be updated in real time throughout the egress

Pedestrian management arrangements will also be in place in Lang Road to safely move pedestrians from Centennial Parklands to the Showground Fields and the Entertainment Quarter car parks.

Temporary Road Closure – Saturday 1 October 2016

Moore Park Road at Oxford Street be temporarily closed from 9:00pm to 11:30pm on Saturday 1 October 2016 subject to the NSW Police deeming it necessary for the safe egress of the crowd at the conclusion of the event.

If the closure is implemented, the road will be closed until the crowd is dispersed and the intersection can again handle regular pedestrian flows. It is anticipated that Moore Park Road will be reopened by 11:30pm.

The temporary road closure does not affect any other properties as local access was provided at all times and alternative access routes were available nearby.

CONSULTATION

The Applicant was required to notify affected residents and stakeholders as stipulated in Schedule C.

FINANCIAL

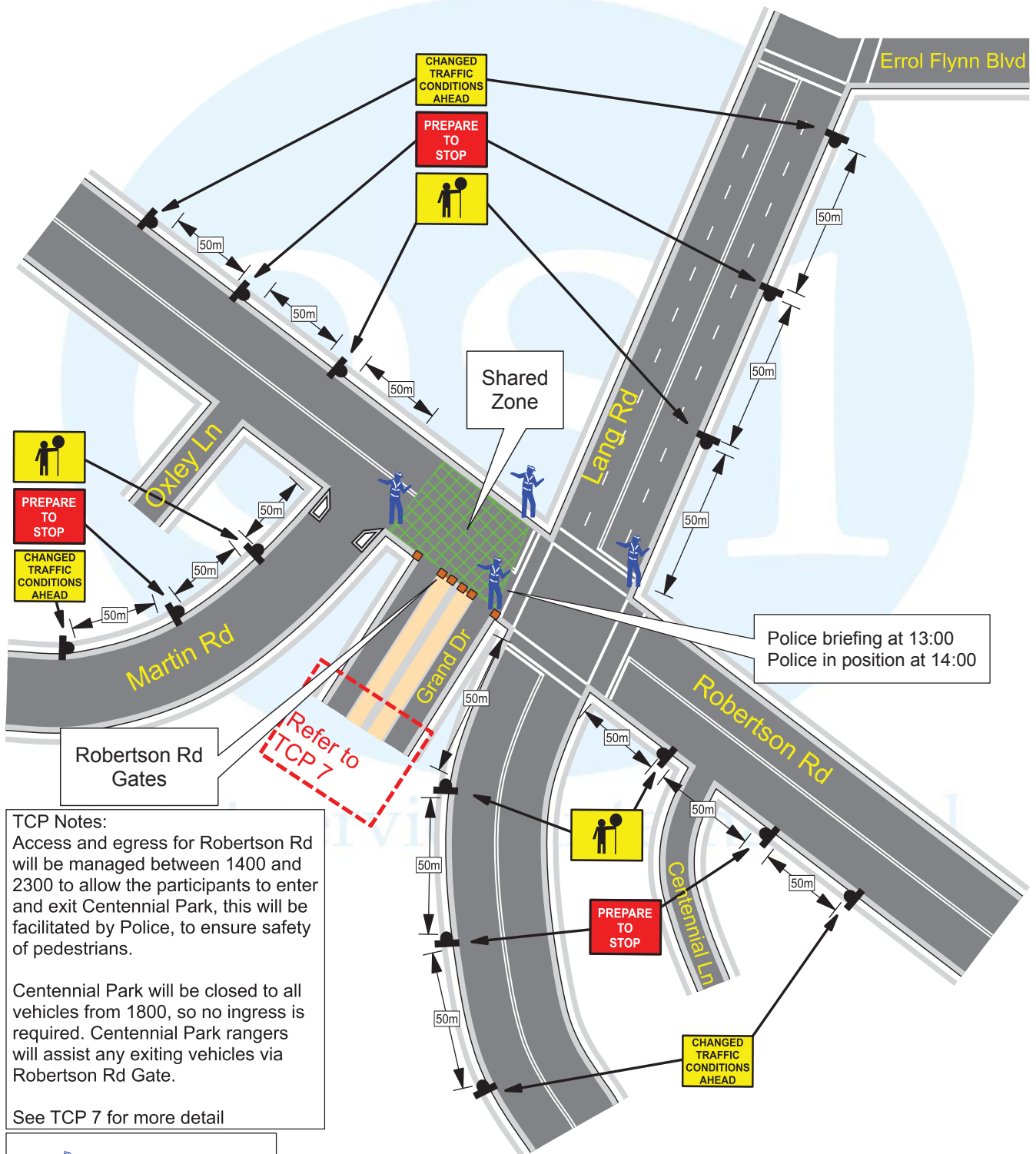
All costs associated with the proposed closures was borne by the Applicant.

ATTACHMENTS

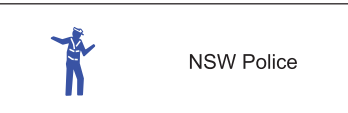
Street Events – Temporary Road Closure – 2016 Listen Out Music Festival – Moore Park
Road Centennial Park

Joseph Gomes, Area Traffic Engineer

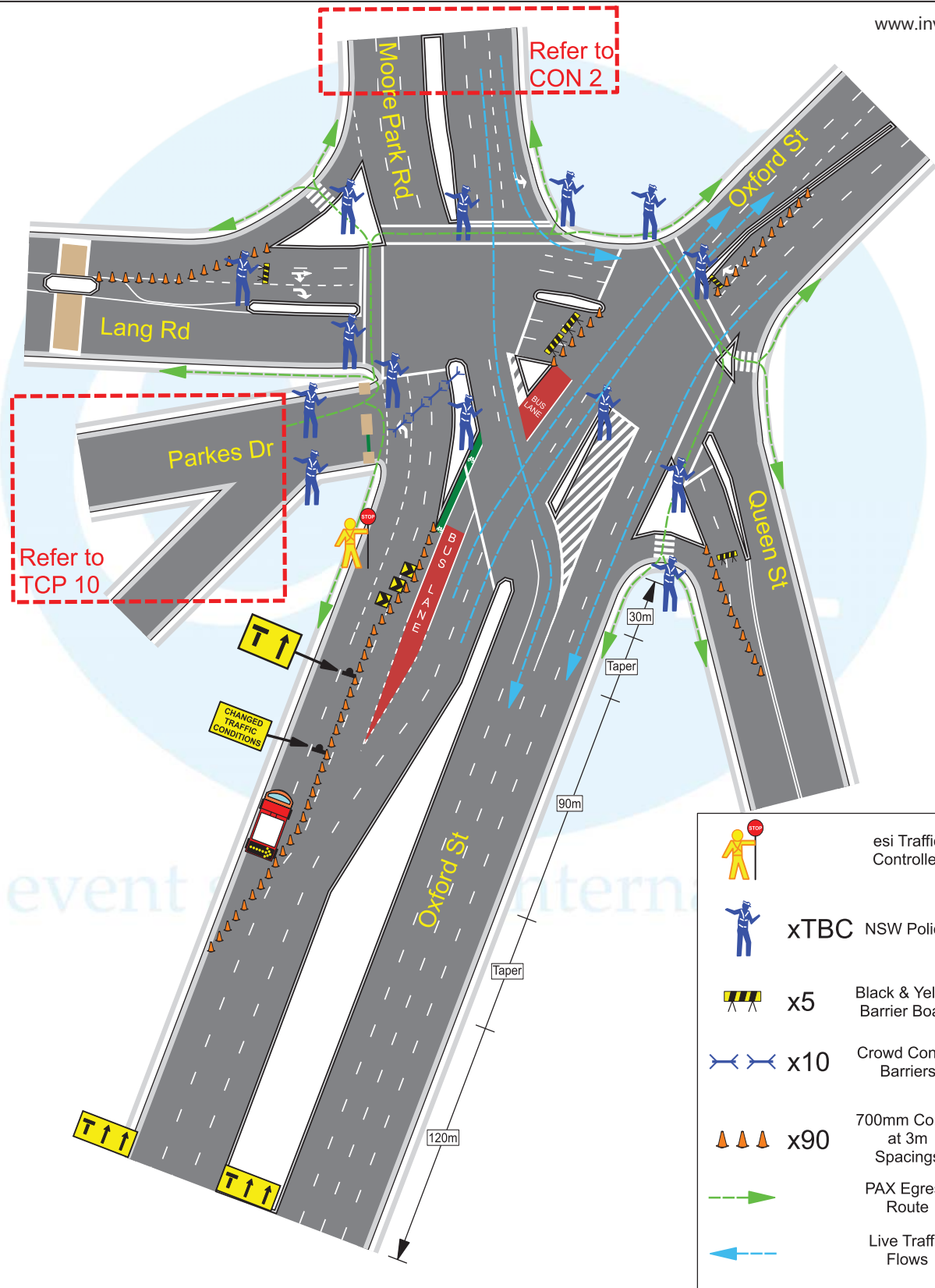




TCP Notes:
 Access and egress for Robertson Rd will be managed between 1400 and 2300 to allow the participants to enter and exit Centennial Park, this will be facilitated by Police, to ensure safety of pedestrians.
 Centennial Park will be closed to all vehicles from 1800, so no ingress is required. Centennial Park rangers will assist any exiting vehicles via Robertson Rd Gate.
 See TCP 7 for more detail



Robertson Rd at Lang Rd - Managed Access				N.B. NOT TO SCALE		TCP 6
Agency	Primary Task	Secondary Task	No. Staff	Date	Times	
esi	Supply Signs, Implement Infrastructure			1st October 2016	Install- 13:00 Operational- 14:00 Remove- 23:00	
Police	Managed Access for Residents	Stop all vehicles for pax movement from park	4			
Listen Out Sydney - Fuzzy, Cent. Park - 1st October 2016				Standard TCP Reference: N/A Custom TCP		Version 1 - 17/5/16
Drawn By: Matt Giles				Implemented By: esi		
RMS - Prepare a Work Zone TMP - Lic. 0024952469						



- esi Traffic Controller
- xTBC NSW Police
- x5 Black & Yellow Barrier Board
- x10 Crowd Control Barriers
- x90 700mm Cones at 3m Spacings
- PAX Egress Route
- Live Traffic Flows



Oxford St at Paddington Gates - Pedestrian Management Egress **N.B. NOT TO SCALE**

TCP 19


Agency	Primary Task	Secondary Task	No. Staff	Date	Times
esi	Supply Signs, Implement Infrastructure	Monitor Closure	1	1st October 2016	Install- 21:30
Police	Implement Infrastructure	Manage Event Pedestrian Egress	TBC		Remove- 23:30
Listen Out Sydney - Fuzzy, Cent. Park - 1st October 2016			Version 1 - 17/5/16		
Drawn By: Matt Giles RMS - Prepare a Work Zone TMP - Lic. 0024952469			Standard TCP Reference: T0001000 STW 3 Lane / Divided, N/A Custom TCP Implemented By:		





event services international Pty Ltd accepts no liability for the implementation or execution of this document unless undertaken by authorised esi personnel. This document is COMMERCIAL IN CONFIDENCE in accordance with section 127(1) of the Corporations Act 2001 (Cth) and is NOT TRANSFERABLE UNLESS AUTHORISED BY event services international Pty Ltd.

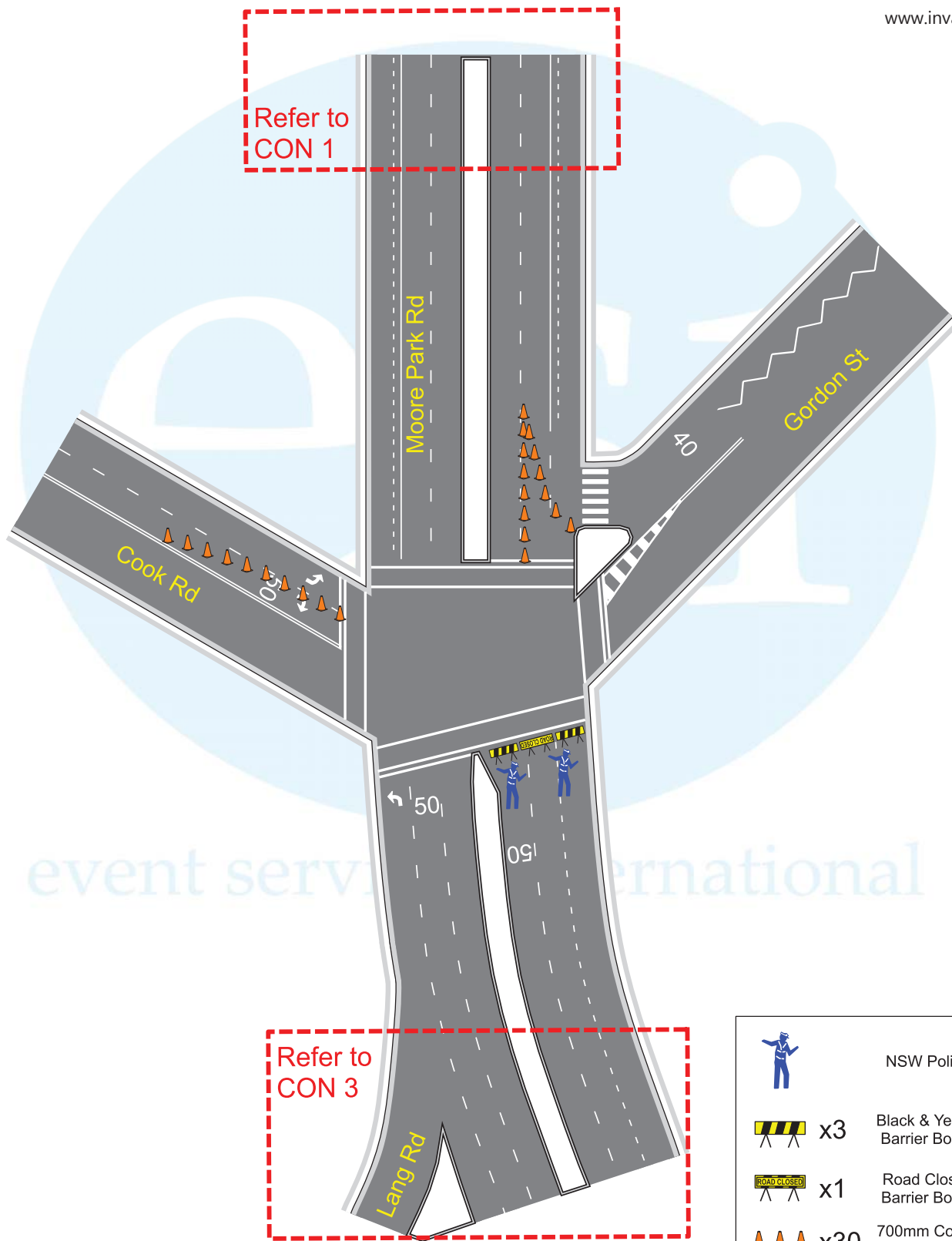


Refer to
CON 2

	NSW Police
 x2	Black & Yellow Barrier Board
 x1	Road Closed Barrier Board
 x20	700mm Cones at 3m Spacings

 <p>esi event services international</p>	Moore Park Rd at Oatley Rd - CONTINGENCY					N.B. NOT TO SCALE	CON 1 
	Agency	Primary Task	Secondary Task	No. Staff	Date	Times	
	esi	Supply Signs			1st October 2016	Contingency implemented when needed	
Police	Implement Infrastructure	Man Closure	2				
Listen Out Sydney - Fuzzy, Cent. Park - 1st October 2016					Standard TCP Reference: N/A Custom TCP		Version 1 - 17/5/16
Drawn By: Matt Giles					Implemented By: NSW Police		
RMS - Prepare a Work Zone TMP - Lic. 0024952469							

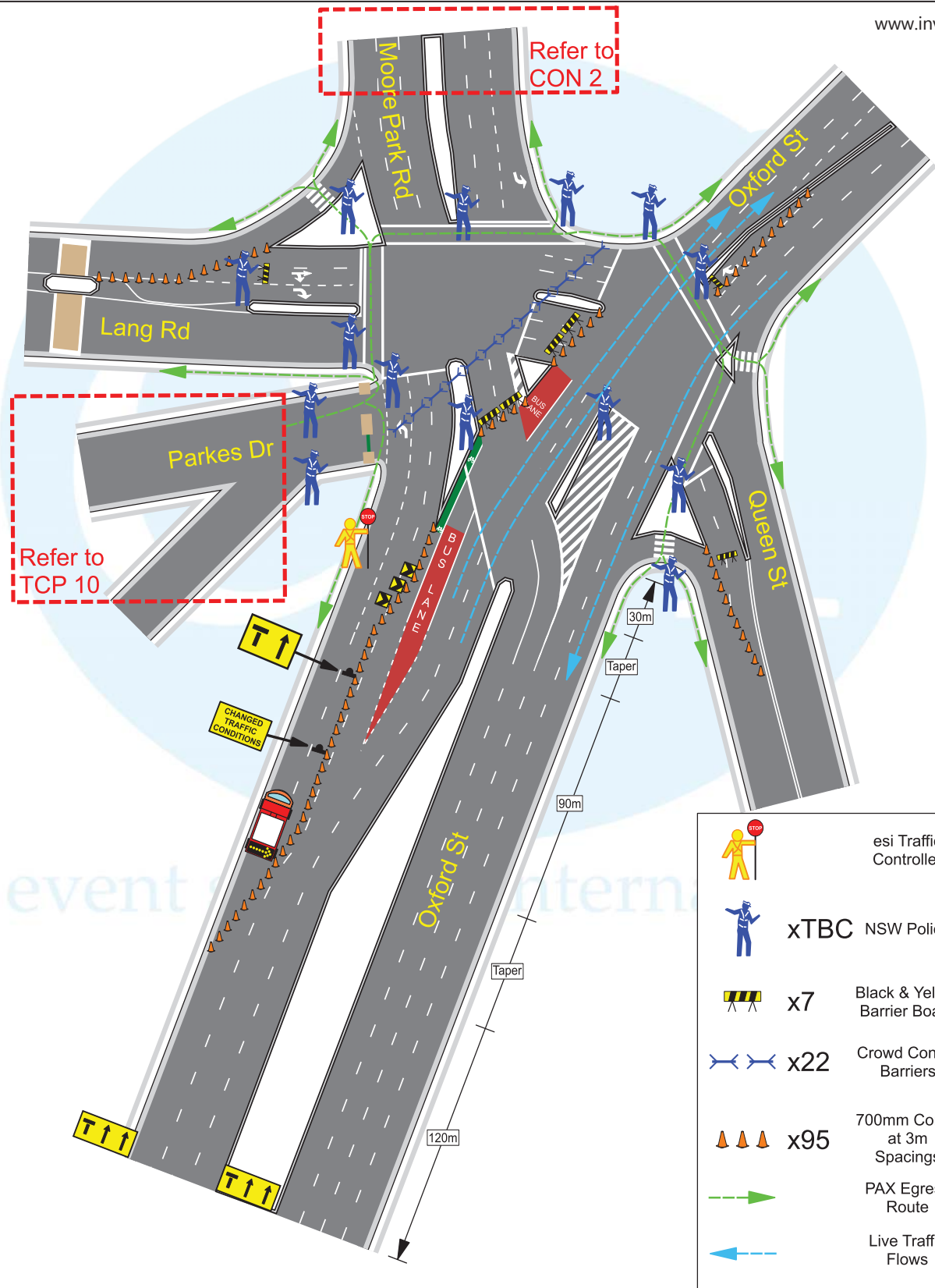
event services international Pty Ltd accepts no liability for the implementation or execution of this document unless undertaken by authorised esi personnel. This document is COMMERCIAL IN CONFIDENCE in accordance with section 127(1) of the Corporations Act 2001 (Cth) and is NOT TRANSFERABLE UNLESS AUTHORISED BY event services international Pty Ltd.



	NSW Police
x3	Black & Yellow Barrier Board
x1	Road Closed Barrier Board
x30	700mm Cones at 3m Spacings



Moore Park Rd at Cook Rd - CONTINGENCY				N.B. NOT TO SCALE		CON 2
Agency	Primary Task	Secondary Task	No. Staff	Date	Times	
esi	Supply Signs			1st October 2016	Contingency implemented when needed	
Police	Implement Infrastructure	Man Closure	2			
Listen Out Sydney - Fuzzy, Cent. Park - 1st October 2016				Standard TCP Reference: N/A Custom TCP		Version 1 - 17/5/16
Drawn By: Matt Giles				Implemented By: NSW Police		
RMS - Prepare a Work Zone TMP - Lic. 0024952469						



- esi Traffic Controller
- xTBC NSW Police
- x7 Black & Yellow Barrier Board
- x22 Crowd Control Barriers
- x95 700mm Cones at 3m Spacings
- PAX Egress Route
- Live Traffic Flows



Oxford St at Paddington Gates - CONTINGENCY **N.B. NOT TO SCALE**

CON 3

Agency	Primary Task	Secondary Task	No. Staff	Date	Times
esi	Supply Signs, Implement Infrastructure	Monitor Closure	1	1st October 2016	Contingency implemented when needed
Police	Implement Infrastructure	Manage Event Pedestrian Egress	TBC		

Listen Out Sydney - Fuzzy, Cent. Park - 1st October 2016
 Drawn By: Matt Giles
 RMS - Prepare a Work Zone TMP - Lic. 0024952469
 Standard TCP Reference: T0001000 STW 3 Lane / Divided, N/A Custom TCP
 Implemented By:



event services international Pty Ltd accepts no liability for the implementation or execution of this document unless undertaken by authorised esi personnel. This document is COMMERCIAL IN CONFIDENCE in accordance with section 127(1) of the Corporations Act 2001 (Cth) and is NOT TRANSFERABLE UNLESS AUTHORISED BY event services international Pty Ltd.

